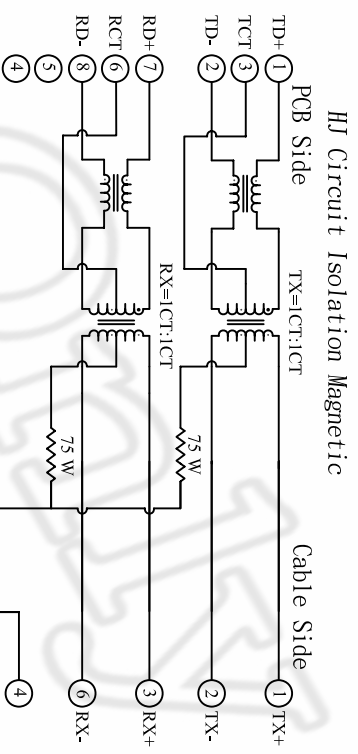
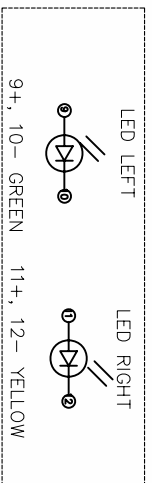
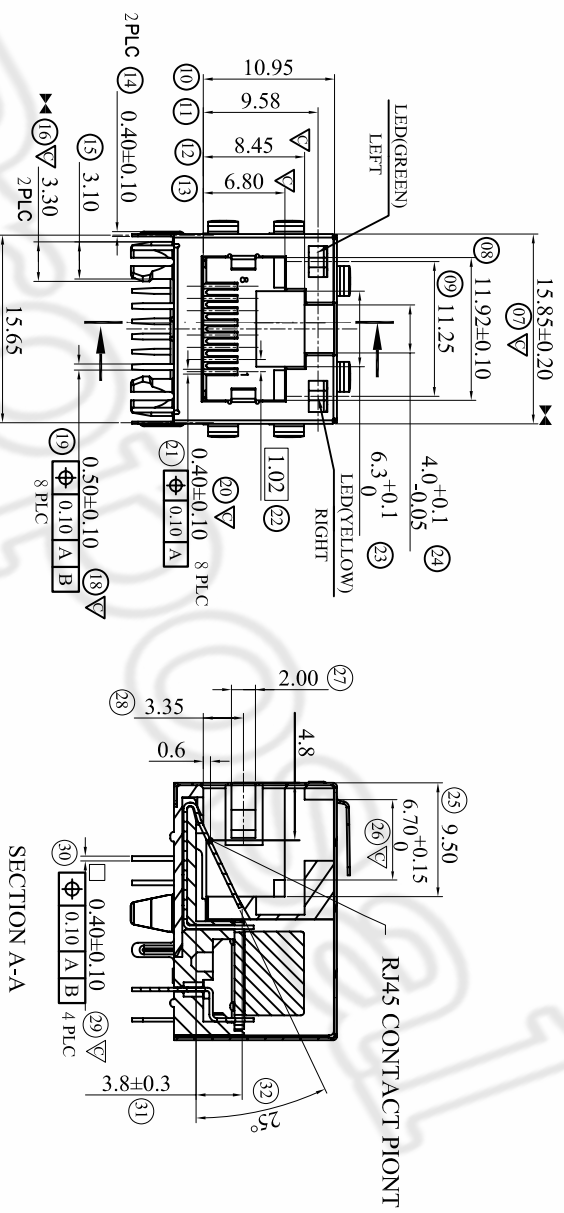
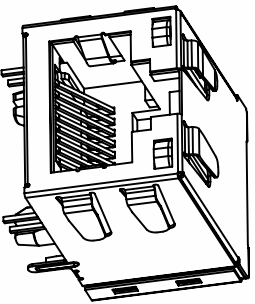
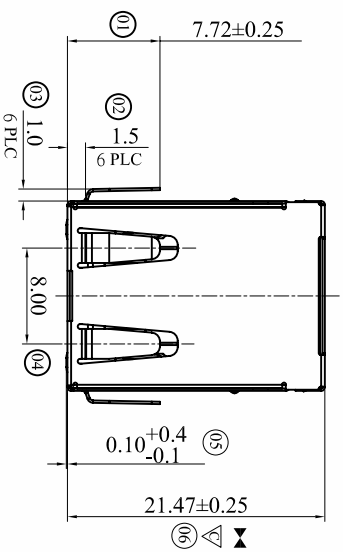


REV	ECN NO.	BY	DATE
A0	NEW DWG	李占春	11.10.20



12411-012H1620-25R

环保标准: ROHS
 产品材质: 主体PA46,114C 黄
 电镀规格码: 镀半金3u"
 产品延伸码
 脚后3.05MM
 产品弹片规格: 6弹片
 产品线路规格: HJ线路
 LED规格: 左绿右黄
 产品序列码
 产品PORT数: 单PORT
 产品层数: 单层
 主结构码: 扁针开口向上全包
 MAG45 滤波器产品

COMPLIANCE WITH THE REQUIREMENT RoHS HF SONY00259 OTHER
 ※ NO USING RESTRICTED AND BANNED SUBSTANCE

CUSTOMER DRAWING		LITEC LITECONN Co., Ltd.	
-TOLERANCES- UNLESS OTHERWISE SPECIFIED		TITLE: MAG45 1*1 全包10/100M	
X.X	±0.35	X.X°	±3°
X.XX	±0.25	X.XX°	±1°
X.XXX	±0.15	X.XXX°	±0.5°
APPD:		DWG NO: 12411-012H1620-25R	
CHECK:		DATE: 2011.10.20	
DRAWN: 李占春		SCALE: mm	
		PAGE: 1/2	

