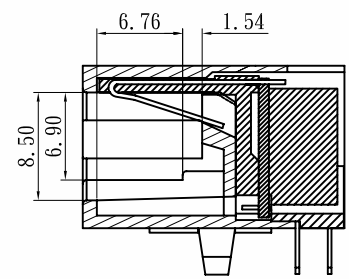
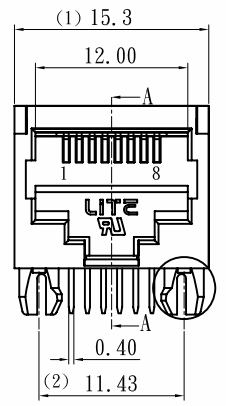
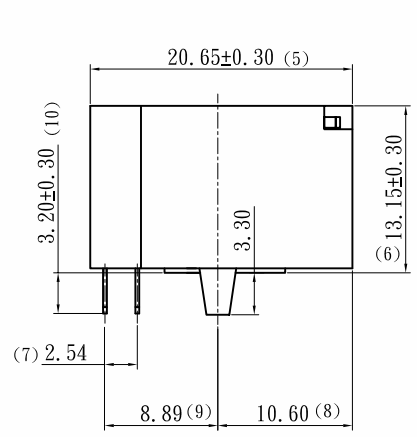
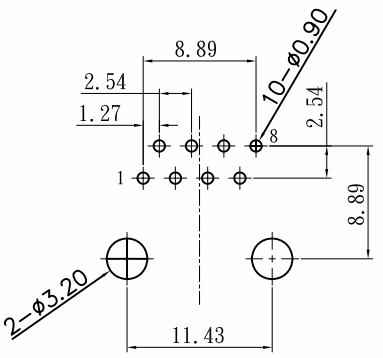


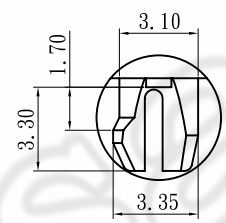
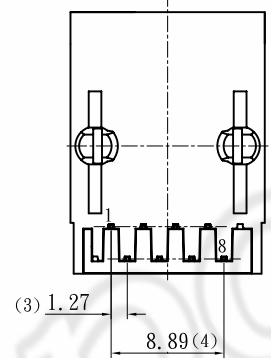
REV	ECN. NO:	BY	DATE
A0	NEW DWG T110810	陳敬軍	11/08/19



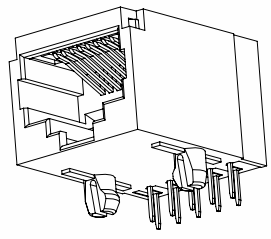
SECTION A-A



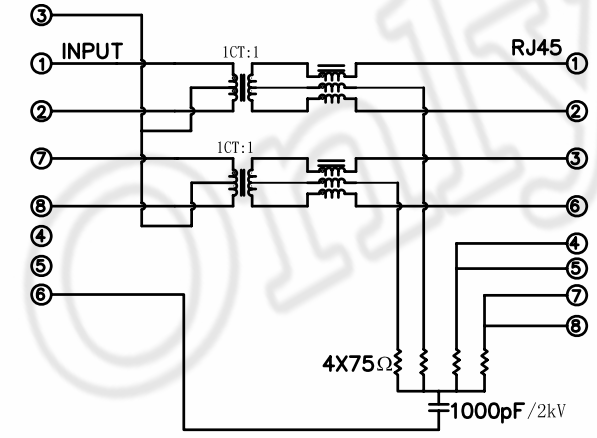
PCB LAYOUT



DETAIL A
SCALE: 2:1



SCHEMATIC
DP Circuit Isolation Magnetic



NOTE :

- MATERIALS:**
HOUSING: THERMOPLASTIC POLYESTER; BLACK
RJ CONTACT: COPPER ALLOY, T=0.35±0.02mm.
JOINT CONTACT: COPPER ALLOY, T=0.30±0.02mm.
- PLATING:**
RJ CONTACTS: SELECT GOLD PLATED OVER NICKEL UNDERPLATED OVERALL
JOINT CONTACTS: TIN PLATED OVER NICKEL UNDERPLATED OVERALL
- SPECIFICATION:**
OPERATING TEMPERATURE : 0°C~+70°C
STORAGE: -40°C~+85°C
DURABILITY: 750 CYCLES MIN
TYPE: BALANCE LOW PASS 100Ω IMPEDANCE
INSERTION LOSS: 1-100MHz-1.0dB MAX.
RETURN LOSS: 1-30MHz-18dB MIN.
30-60MHz-16dB MIN.
60-80MHz-12dB MIN.
CROSS TALK: @1-100MHz-30dB MIN.
COMMON MODE REJECTION: @1-100 MHz-30dB MIN
INDUCTANCE AT 100KHz 100mV, 8mA DC BIAS: 350uH MIN.
HI-POT: 1500Vrms OUTPUT TO INPUT
- WEIGHT: 3.69g/pcs
- MANUFACTORY: MADE IN CHINA

6. 12311 - 010DP000-23R

- 环保标准: ROHS
- 产品材质: PA46, 黑色
- 电镀规格码: 镀半金3u"
- 产品延伸码
- 脚前
- 产品弹片规格: 无弹片
- 产品线路规格: DP线路
- LED规格: 无LED
- 产品序列码
- 产品PORT数: 单PORT
- 产品层数: 单层
- 主结构码: 扁针PORT口下阶全塑
- RJF滤波器产品

COMPLIANCE WITH THE REQUIREMENT RoHS HF SONY00259 OTHER
※ NO USING RESTRICTED AND BANNED SUBSTANCE

CUSTOMER DRAWING		LITE		LITECONN Co., Ltd.			
-TOLERANCES- UNLESS OTHERWISE SPECIFIED				TITLE: RJF 1層1PORT 10/100M 8P8全塑			
X. X	±0.35	X. X°	±3°	APPD:	DWG NO: 12311-010DP000-23R		
X. XX	±0.25	X. XX°	±1°	CHECK:	DATE	SCALE	UNIT
X. XXX	±0.15	X. XXX°	±0.5°	DRAW: 陳敬軍	11/08/19	FREE	mm
							1/1