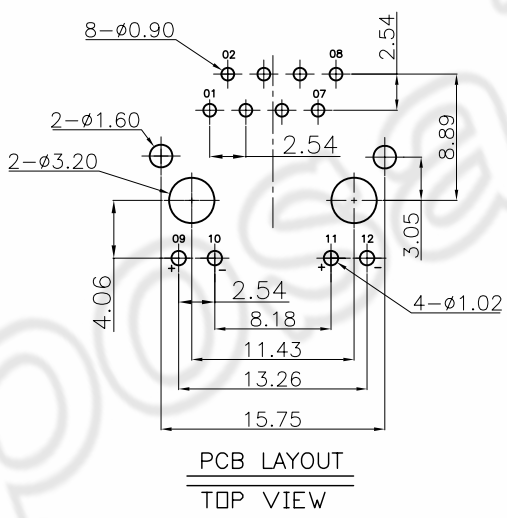
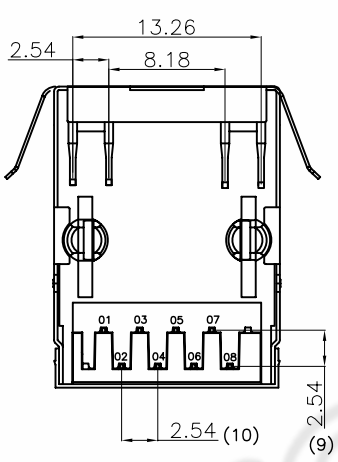
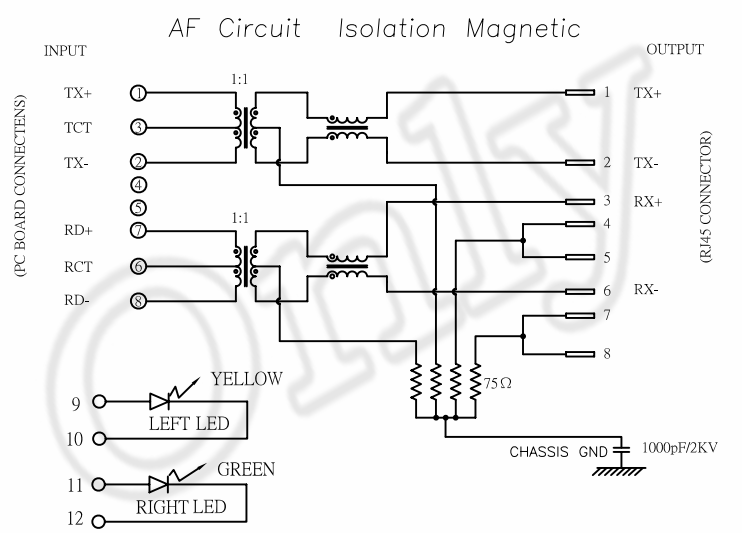
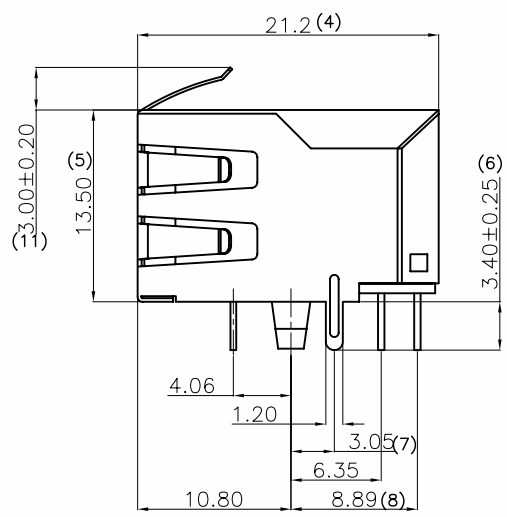
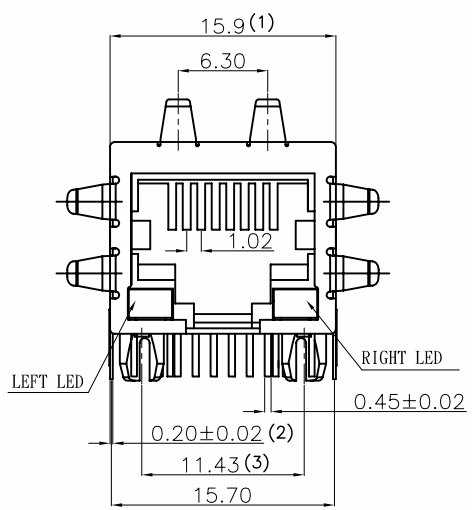


REV	ECN.NO:	BY	DATE
AO	NEW DWG	李占春	11.10.14



NOTE 1:
 1.MATERIALS:
 HOUSING:THERMOPLASTIC POLYESTER, BLACK;
 RJ CONTACT:PHOSPHOR BRONZE,T=0.35±0.02mm.
 JOINT CONTACT:BRASS,T=0.30±0.02mm.
 SHELL:BRASS,T=0.20±0.01mm.
 2.PLATING:
 RJ CONTACTS: SELECT GOLD PLATED OVER NICKEL UNDERPLATED OVERALL
 JOINT CONTACTS: TIN PLATED OVER NICKEL UNDERPLATED OVERALL
 SHELL: NICKEL UNDERPLATED OVERALL
 3.SPECIFICATION:
 OPERATING TEMPERATURE : 0°C~+70°C
 STORAGE: -40°C~+85°C
 DURABILITY: 750 CYCLES MIN
 TYPE: BALANCE LOW PASS 100 IMPEDANCE
 INSERTION LOSS: 1~100MHz-1.0dB MAX.
 RETURN LOSS: 1~30MHz-18dB MIN.
 30~60MHz-16dB MIN.
 60~80MHz-12dB MIN.
 CROSS TALK: @1~100MHz-35dB MIN.
 COMMON MODE REJECTION: @1~100 MHz-30dB MIN
 INDUCTANCE AT 100KHz 100mV, 8mA DC BIAS: 350uH MIN.
 HI-POT: 1500Vrms (INPUT TO OUTPUT)

4. 12111-041AF621-33R
- 環保標準: ROHS
 - 產品材質: PA46, BLACK
 - 電鍍規格碼: 鍍半金6u"
 - 產品延伸碼: 腳柱無卡點
 - 腳後3.05
 - 產品彈片規格: 六彈片
 - 產品線路規格: AF線路
 - LED規格: 左黃右綠
 - 產品序列碼
 - 產品PORT數: 單PORT
 - 產品層數: 單層
 - 主結構碼: 扁針PORT口下階全包
 - RJ濾波器產品

COMPLIANCE WITH THE REQUIREMENT ROHS HF SONY00259 OTHER
 ※ NO USING RESTRICTED AND BANNED SUBSTANCE

CUSTOMER DRAWING		LITE Liteconn Co.,Ltd.	
-TOLERANCES- UNLESS OTHERWISE SPECIFIED		TITLE: RJ TRANSFORMER 10/100M 單層單PORT 8P8(W/LED)燈腳平行式	
X.X ±0.35	X.X* ±3*	APPD:	DWG NO: 12111-041AF621-33R
X.XX ±0.25	X.XX* ±2*	CHECK:	DATE: 2011.10.14
X.XXX ±0.15	X.XXX* ±1*	DRAW: 李占春	SCALE: 1:1
			UNIT: MM
			PAGE: 1/1