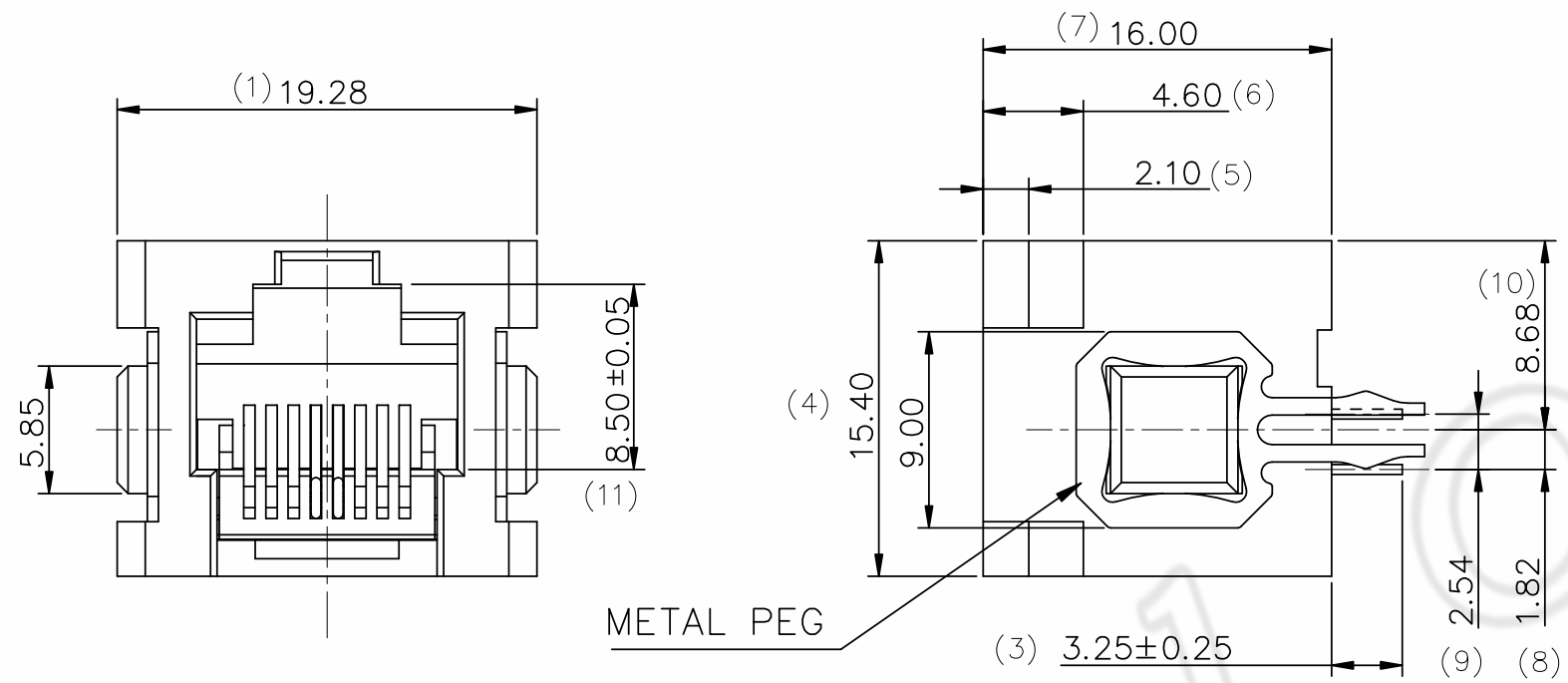
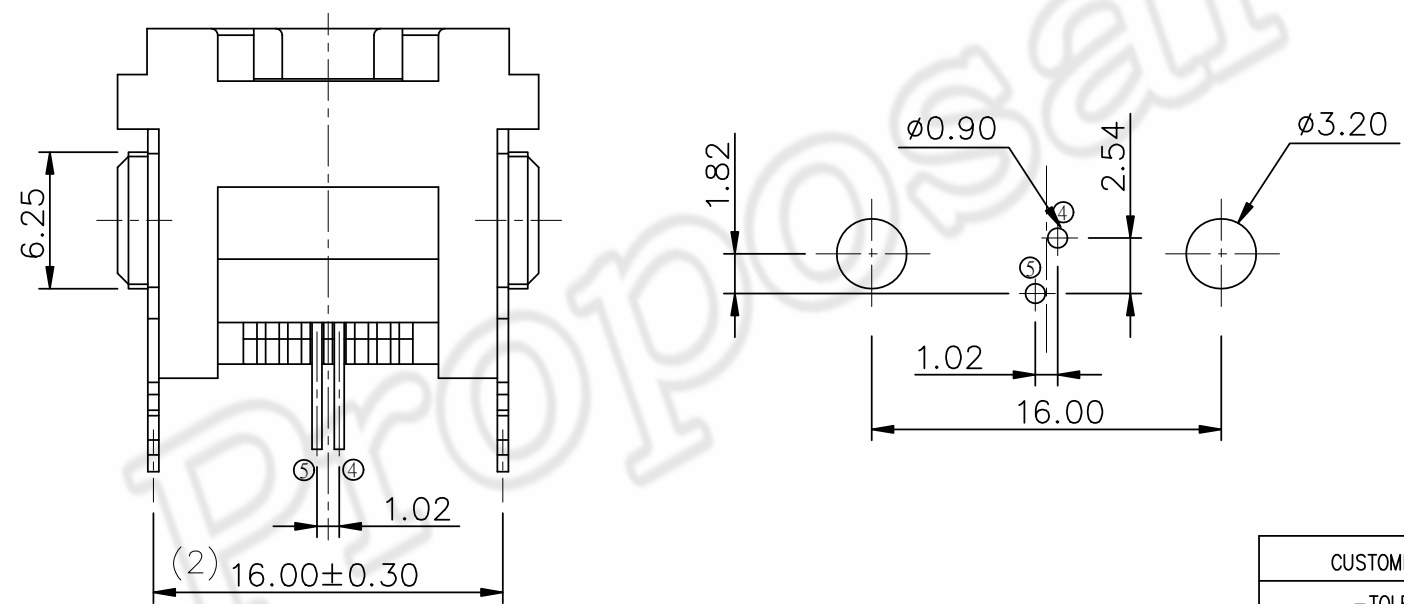


REV	ECN.NO:	BY	DATE
A0	NEW DWG	莊東	10.10.11



- NOTES:
- MATERIAL:
 - HOUSING&COVER: HIGH TEMPERATURE THERMOPLASTIC WITH 30%G.F; UL94V-0; COLOR: SEE NOTES 6
 - CONTACT: COPPER ALLOY; $\phi 0.45\text{mm}$
 - METAL PEG: COPPER ALLOY
 - FINISH:
 - CONTACT: GOLD PLATING(SEE TABLE)
 - METAL PEG:
 - 2.54um [100u"] MIN. TIN PLATED.
 - 1.27um [50u"] MIN. NICKEL UNDER-PLATED OVERALL.
 - RECOMMENDED P.C.B THICKNESS : 1.6mm
 - OTHER GENERAL SPEC. TO REFER : RJ45 SERIES SPEC.
 - FOR WAVE SOLDERING LEAD-FREE PROCESS
 - 10211-01900000-X X X X

- R: RoHS
- COLOR: A. 420C
- MATERIAL: 1. PA66, 2. PBT
- PLATING: 2. Au 3u", 3. Au 6u"



4	FORK	SEE PART DRAWING	TIN PLATED	
3	CONTACT	SEE PART DRAWING	GOLD PLATED	
2	BACK PLASTIC	SEE PART DRAWING	UL 94V-0	
1	HOUSING	SEE PART DRAWING	UL 94V-0	
NO:	DESCRIPTION	MATERIAL	COLOR	REMARK

TABLE

2	10211-01900000-31AF	Au6u"	PA66	420C	RoHS
1	10211-01900000-22AF	Au3u"	PBT	420C	RoHS
NO:	PART NO:	PLATING	MATERIAL	COLOR	ENVIRONMENTAL

COPLIANCE WITH THE REQUIEMENT RoHS HF SONY00259 OTHER
 ※ NO USING RESTRICTED AND BANNED SUBSTANCE

CUSTOMER DRAWING		LITE Liteconn Co.,Ltd.	
-TOLERANCES- UNLESS OTHERWISE SPECIFIED		TITLE: RJ45單PORT 8P2 180度全塑圓針	
X.X ±0.35	X.X* ±3'	APPD:	DWG NO: 10211-01900000-XXXX
X.XX ±0.25	X.XX* ±2'	CHECK:	DATE: 2010.10.11
X.XXX ±0.15	X.XXX* ±1'	DRAW: 莊東	SCALE: 1:1
			UNIT: MM
			PAGE: 1/1